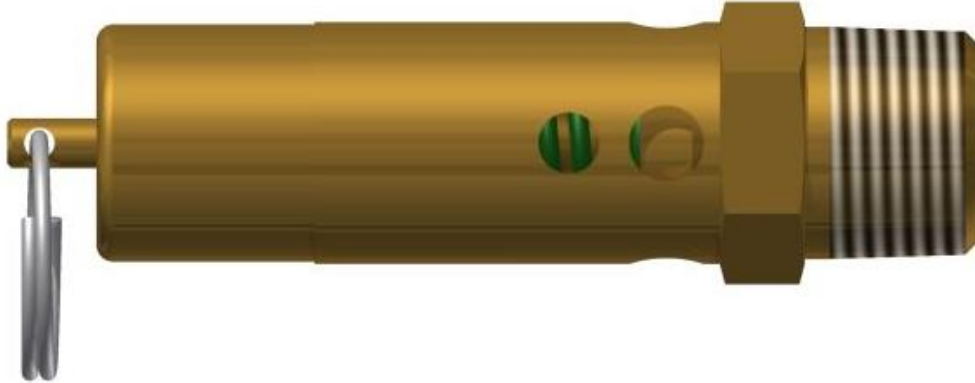




**Pressure Relief Valve  
Model: SRH375**



**Set Pressure Range: 50-350 psig**

**Set Pressure Tolerance:  $\pm 2$  psig up to and including 70 psig,  $\pm 3\%$  of set pressure greater than 70 psig. As required in paragraph UG-134(d)(1) of the ASME Boiler & Pressure Vessel Code Sec. VIII Div. 1.**

**Seat Leakage: No audible leak at 45% set pressure at 25-74 psig.  
No audible leak at 90% set pressure above 74 psig.  
As required by Conrader Standards, allowed by paragraph UG-136(d)(5) of the ASME Boiler & Pressure Vessel Code Sec. VIII Div. 1.**

**Flow Factor (Slope Method): 1.67**

**Operating Temperature Range: -65°F to 400°F**

**Materials of Construction:**

**Seat, Cap, Piston: ASTM B16 Brass or ASTM A582 Stainless  
Spring: 302 Stainless Steel  
Sealing Ball: 440 Stainless Steel**

**Valve Weight: 0.405 lbm**

**Valve Options:**

**Valve Material: ASTM B16 Brass or ASTM A582 Stainless  
Compliance with European PED 2014/68/EU, "CE" Stamp  
Compliance with UK PESR SI 2016 no. 1105 as amended, "UK" Stamp  
Plating: Nickel Plating  
Inlet NPT Sizes: 3/8 NPT or BSPT  
1/2 NPT or BSPT**

**Certifications:**

**ASME Boiler & Pressure Vessel Code Section VIII Division 1  
CSA B51-03 Boiler, Pressure, Vessel, and Pressure Piping Code**



## Ordering Information

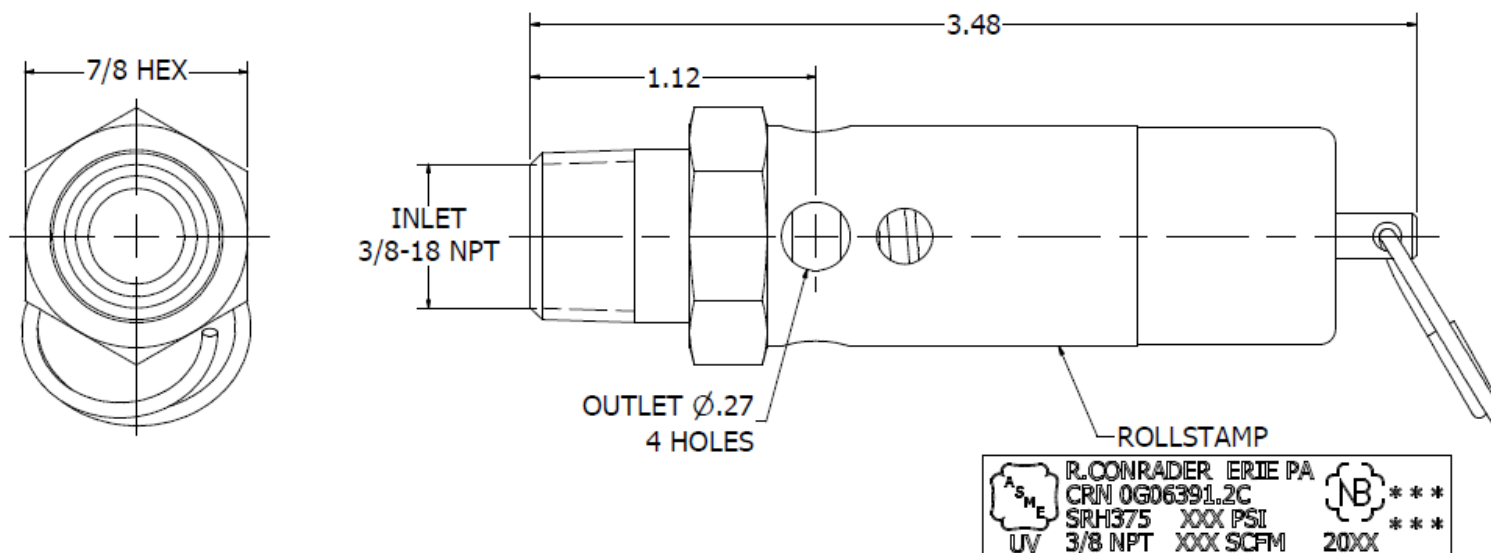
<b>SRH375</b>		-	<b>1/2</b>		-	<b>BSPT</b>		-	<b>SS</b>		-	<b>CE</b>		-	<b>SC</b>		-	<b>SST</b>		-	<b>150</b>	
<b>Connection Size</b>		<b>Connection Type</b>		<b>Construction Material</b>		<b>Optional Code</b>		<b>Serialized</b>		<b>Thread Sealant</b>		<b>Pressure Setting</b>										
<u>Option</u>	<u>Code</u>	<u>Option</u>	<u>Code</u>	<u>Option</u>	<u>Code</u>	<u>Option</u>	<u>Code</u>	<u>Option</u>	<u>Code</u>	<u>Option</u>	<u>Code</u>											
3/8"	3/8	NPT	(Blank)	Brass	(Blank)	None	(Blank)	None	(Blank)	None	(Blank)											
1/2"	1/2	BSPT	BSPT	Nickel Plated	NP	CE Mark	CE	Serialized	SC	White	SST											
				Stainless Steel	SS	Non-Code	NC															

## Options

1. Connection Size: The available sizes are 3/8" or 1/2".
2. Connection Type
  - a. NPT – Pipe Threads made to the ASME B1.20.1 Standard
  - b. BSPT – Pipe Threads made to the ISO 7-1 Standard
3. Construction Material
  - a. Brass
  - b. Nickel Plated – Electroless Nickel Plated Brass
  - c. Stainless Steel
4. Optional Code
  - a. None: Will meet the requirements of ASME BPV Code Section VIII Division 1.
  - b. CE/UKCA Mark: Valve has the “CE/UKCA” certification for the European PED and UK PESR.
  - c. Non-Code: For valves with a pressure setting below 25 psi.
5. Serialized Valves: Have a unique serial number and include certificate.
6. Thread Sealant
  - a. White colored thread sealant
  - b. Rust colored thread sealant

Examples:

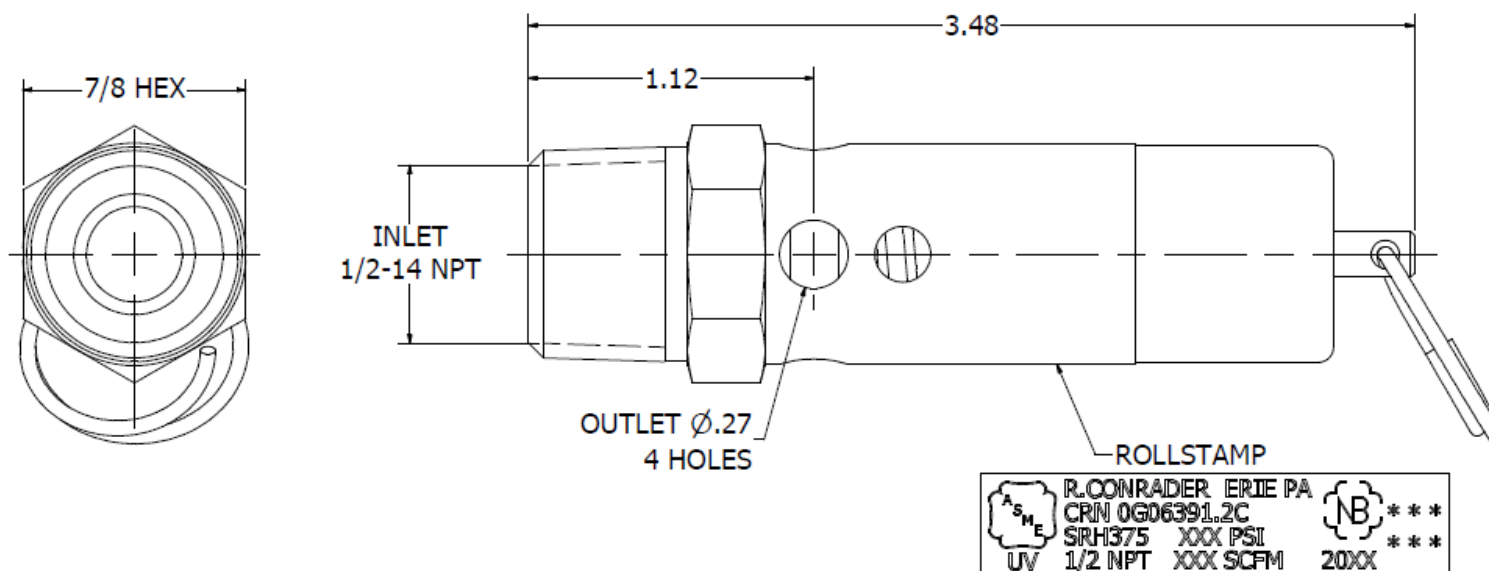
1. A 1/2" NPT brass valve set 200 psi is **SRH375-1/2-200**.
2. A 3/8" BSPT brass valve with white thread sealant set at 100 psi is **SRH375-3/8-BSPT-SST-100**.



# NOTES:


- \* OPERATING TEMPERATURE RANGE: -65°F TO 400°F
- \* SET PRESSURE RANGE: 50-350 psig
- \* SET PRESSURE TOLERANCE:  $\pm 2$  psig UP TO AND INCLUDING 70 psig,  $\pm 3\%$  OF SET PRESSURE GREATER THAN 70 psig.
- \* SEAT TIGHTNESS: NO AUDIBLE LEAK AT 45% OF SET PRESSURE FOR SET PRESSURE 25-74 psig. NO AUDIBLE LEAK AT 90% OF SET PRESSURE FOR SET PRESSURE GREATER THAN 74 psig.
- \* VALVE WEIGHT: 0.37 lbmass

<b>CONRADER VALVES</b> R. CONRADER COMPANY 749 EAST 18TH STREET P.O. BOX 924 ERIE, PA 16512-0924 (814) 898-2727	DESCRIPTION	ISSUED BY	ISSUED	GROUP
	DIM. OUTLINE	STAUFFER	10/30/2008	SV
THIS DOCUMENT CONTAINS INFORMATION CONFIDENTIAL TO CONRADER. LOANED SUBJECT TO THE CONDITIONS THAT IT NOT BE USED OR CAUSED TO BE USED IN ANY WAY HARMFUL TO CONRADER AND BE RETURNED ON DEMAND.	VALVE MODEL	REVISED BY	REVISED	PAGE 2 OF 4
	SRH375-3/8	NRP	4/18/2016	
	MATERIAL	SCALE	DRAWING NO.	REVISION
		3:2	4941	E



**NOTES:**

- \* OPERATING TEMPERATURE RANGE: -65°F TO 400°F
- \* SET PRESSURE RANGE: 25-350 psig
- \* SET PRESSURE TOLERANCE:  $\pm 2$  psig UP TO AND INCLUDING 70 psig,  $\pm 3\%$  OF SET PRESSURE GREATER THAN 70 psig.
- \* SEAT TIGHTNESS: NO AUDIBLE LEAK AT 45% OF SET PRESSURE FOR SET PRESSURE 25-74 psig. NO AUDIBLE LEAK AT 90% OF SET PRESSURE FOR SET PRESSURE GREATER THAN 74 psig.
- \* VALVE WEIGHT: 0.41 lbmass

 <b>CONRADER VALVES</b> <small>R. CONRADER COMPANY          749 EAST 18TH STREET P.O. BOX 924          ERIE, PA 16512-0924 (814) 898-2727</small>	<small>DESCRIPTION</small> <b>DIM. OUTLINE</b>		<small>ISSUED BY</small> <b>L. CONTI</b>	<small>ISSUED</small> <b>1/18/1995</b>	<small>GROUP</small> <b>SV</b>
	<small>VALVE MODEL</small> <b>SRH375-1/2</b>		<small>REVISED BY</small> <b>NRP</b>	<small>REVISED</small> <b>4/18/2016</b>	<small>PAGE 2 OF 4</small>
	<small>MATERIAL</small> 		<small>SCALE</small> <b>3:2</b>	<small>DRAWING NO.</small> <b>0938</b>	<small>REVISION</small> <b>H</b>
	<small>THIS DOCUMENT CONTAINS INFORMATION CONFIDENTIAL TO CONRADER. LOANED SUBJECT TO THE CONDITIONS THAT IT NOT BE USED OR CAUSED TO BE USED IN ANY WAY HARMFUL TO CONRADER AND BE RETURNED ON DEMAND.</small>				



**SRH375 FLOW CAPACITY**

<b><u>SETTING (PSI)</u></b>	<b><u>SCFM</u></b>
50	116
55	125
60	134
65	143
70	153
75	162
80	171
85	180
90	189
95	199
100	208
105	217
110	226
115	235
120	244
125	254
130	263
135	272
140	281
145	290
150	300
155	309
160	318
165	327
170	336
175	346
180	355
185	364
190	373
195	382
200	391

<b><u>SETTING (PSI)</u></b>	<b><u>SCFM</u></b>
205	401
210	410
215	419
220	428
225	437
230	447
235	456
240	465
245	474
250	483
255	492
260	502
265	511
270	520
275	529
280	538
285	548
290	557
295	566
300	575
305	584
310	594
315	603
320	612
325	621
330	630
335	639
340	649
345	658
350	667

**THE NATIONAL BOARD  
OF  
BOILER & PRESSURE VESSEL INSPECTORS**

***Certificate of Authorization***



*This is to certify that*

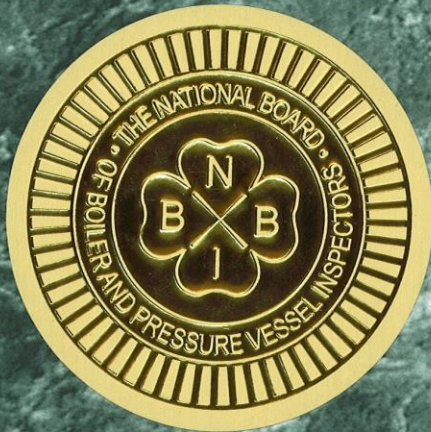
**R. Conrader Company  
3200 West 22nd Street  
Erie, Pennsylvania 16506  
United States**

**Acceptable Abbreviation: R.CONRADER**

*is authorized to use the "NB" mark in accordance with the provisions of NB-501, National Board Certification of Pressure Relief Devices.*

The scope of Authorization is limited to National Board Certified devices which have been manufactured, assembled and marked in accordance with the following construction codes:

**ASME Section VIII, Division 1: "UV"**



Issue Date:

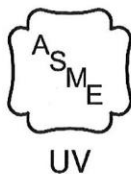
March 19, 2021

Expiration Date:

March 15, 2024

Executive Director





## CERTIFICATE OF AUTHORIZATION

The named company is authorized by The American Society of Mechanical Engineers (ASME) for the scope of activity shown below in accordance with the applicable rules of the ASME Boiler and Pressure Vessel Code. The use of the ASME Single Certification Mark and the authority granted by this Certificate of Authorization are subject to the provisions of the agreement set forth in the application. Any construction stamped with the ASME Single Certification Mark shall have been built strictly in accordance with the provisions of the ASME Boiler and Pressure Vessel Code.

**COMPANY:**

**R. Conrader Company**  
3200 West 22nd Street  
Erie Pennsylvania 16506  
United States

**SCOPE:**

**Manufacture of pressure vessel pressure relief valves at the above location only**  
**(This authorization does not cover welding, brazing or fusing)**

**AUTHORIZED: March 15, 2021**

**EXPIRES: March 15, 2024**

**CERTIFICATE NUMBER: 59272**

A handwritten signature in black ink, appearing to read 'David E. Tuttle'.

Board Chair, Conformity Assessment

A handwritten signature in black ink, appearing to read 'Paul Chang'.

Managing Director, Conformity Assessment





## EU-Type Examination - Production Type Certificate

This is to certify that:

R. Conrader Company  
3160-3200 West 22nd Street  
Erie  
Pennsylvania  
16506  
USA

Holds Certificate Number:

CE 616729

In respect of:

**Safety Accessories.**

On the basis of our examination under the requirements of Council Directive 2014/68/EU Module B of the Pressure Equipment Directive, as transposed into the law of The Netherlands Warenwetbesluit drukapparatuur 2016.

For and on behalf of BSI, a Notified  
Body for the above Directive  
(Notified Body Number 2797):

Drs. Dave Hagenlaars, Managing Director

First Issued: 2014-08-11

Latest Issue: 2022-01-19

Expiry Date: 2024-08-10



Page: 1 of 2

...making excellence a habit.™

This certificate has been issued by and remains the property of BSI Group The Netherlands B.V., John M. Keynesplein 9, 1056 EP Amsterdam, The Netherlands and should be returned immediately upon request.  
To check its validity telephone +31 20 3460780. An electronic certificate can be authenticated [online](#).

BSI Group The Netherlands B.V., registered in the Netherlands under number 33264284, at John M. Keynesplein 9, 1056 EP Amsterdam, The Netherlands  
A member of BSI Group of Companies.



# EU-Type Examination - Production Type Certificate

No. CE 616729

## Additional Information

### Limitations of Certificate Validity

Technical File No. DTF-01 Rev. 1

Model Numbers: SRV187, SRV250, SRV390, SRV530, SRV765, SRH250, SRH375 and SRH580

Maximum Allowable Pressure (PS) = 31.0 bar g (450 psi g)

Minimum/Maximum Allowable Temperature (TS) = -54°C to 204°C (-65°F to 400°F)

Main Material of Manufacture – Copper Alloy and Stainless Steel

First Issued: 2014-08-11

Latest Issue: 2022-01-19

Expiry Date: 2024-08-10

Page: 2 of 2

This certificate has been issued by and remains the property of BSI Group The Netherlands B.V., John M. Keynesplein 9, 1066 EP Amsterdam, The Netherlands and should be returned immediately upon request.  
To check its validity telephone +31 20 3460780. An electronic certificate can be authenticated [online](#).

BSI Group The Netherlands B.V., registered in the Netherlands under number 33264284, at John M. Keynesplein 9, 1066 EP Amsterdam, The Netherlands  
A member of BSI Group of Companies.